



26 Medway Street, Westminster
London SW1P

GARTONJONES.COM

26 Medway Street, Westminster
London, SW1P

GARTON JONES.COM

49 Marsham Street Lettings:
London +44 (0) 20 7340 0480
SW1P 3DP westminster@gartonjones.com
www.gartonjones.com

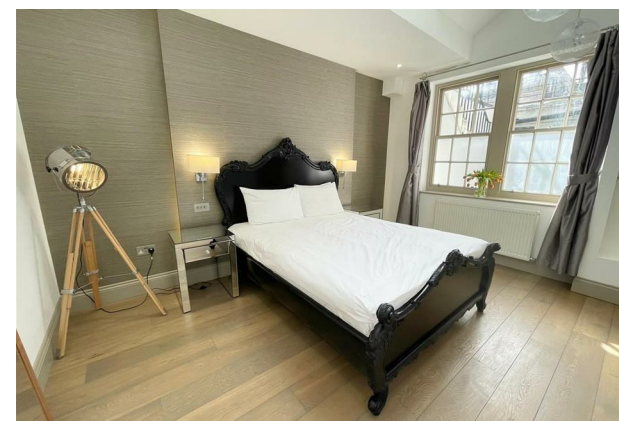
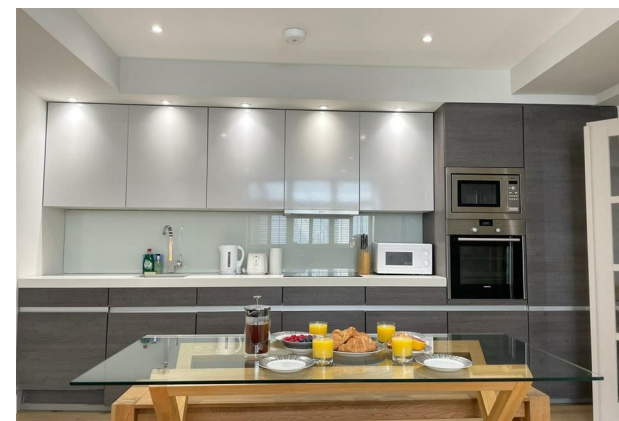
£800 Per Week

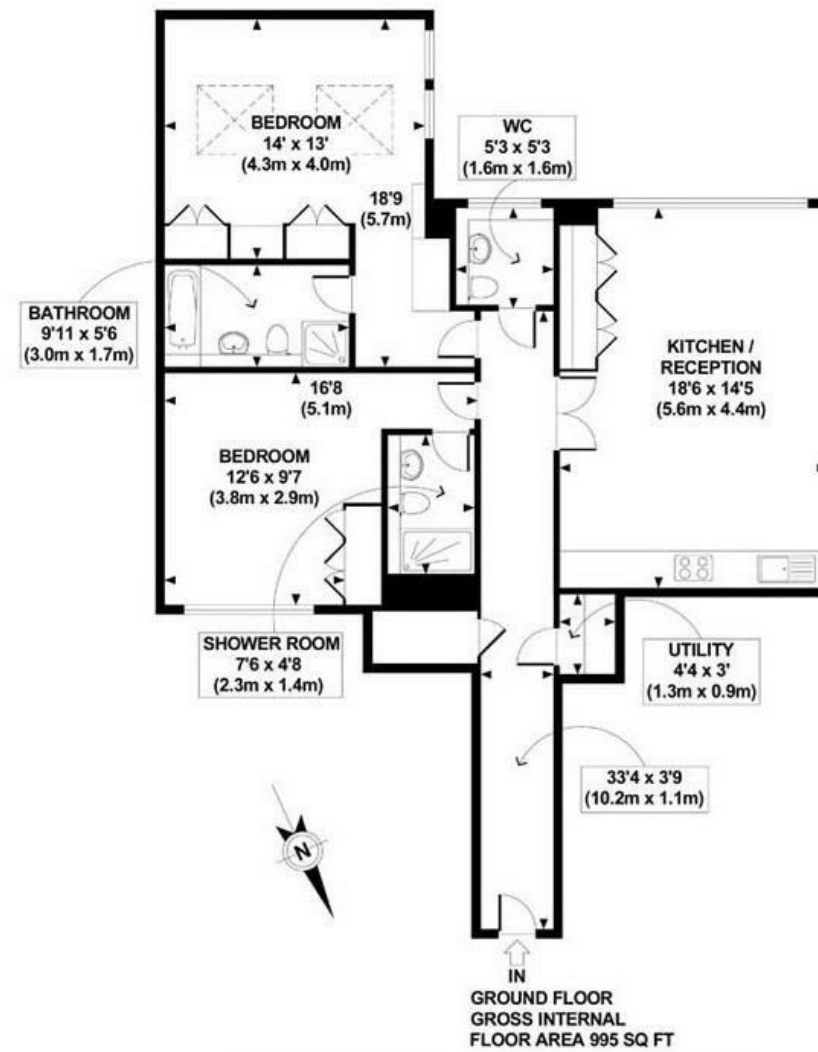
A beautifully presented bright and spacious 2 double bedroom apartment available to let in this small secure development. The property comprises a fabulous open plan reception room with a contemporary leicht integrated kitchen. There are two double bedrooms both with ample built in wardrobes and both benefitting from en-suite bathrooms and a further separate guest WC. Medway Street is just moments from St James Park, Victoria and Westminster Underground Station. There are numerous bus routes that pass along Marsham Street and Horseferry Road which provide regular services into the West End. You will be within walking distance to the shopping facilities of Victoria Street as well as The River Thames, Houses of Parliament and Tate Gallery which are all on the door step. Garton Jones are located in the next road so are readily available for viewings.

**Please note that the furniture may differ to that shown in the current photos please internally view the property

Minimum Tenancy 12 Months
Deposit 5 Weeks
Westminster Council Band F (London Borough of Westminster)
EPC Rating C (70)

- Two Bedroom Apartment
- 995 Square Feet (93 Sq.M)
- Open Plan Reception
- Contemporary Leicht Integrated Kitchen
- 2 Bathrooms (Both En-Suite)
- Separate Guest WC
- Wood Flooring Throughout
- Stylish Furniture Package
- Available: 10th October 2025
- Moments From Transport Links of St James Park, Westminster & Victoria





APPROX. GROSS INTERNAL FLOOR AREA 995 SQ FT / 93 SQ M

